

# APM Terminals Mumbai

## LIFTING INDIA'S TRADE

- Congestion Free Terminal
- Safe & Efficient operations
- Know more about APM Terminals Mumbai



# “Congestion Free Terminal”

## 80% containers moving via roads at Nhava Sheva

**Navi Mumbai, Nhava Sheva:** More than 3/4th of the cargo at Nhava Sheva moves via roads i.e. 3 million TEUs and above.

The Collector’s office and JN Port along with terminal operators are committed to facilitate continuous entry/exit of cargo. The response has been very encouraging from all stakeholders.

To ensure your containers move faster to the terminal’s gates, kindly follow three simple steps:

1. Advise tractor trailer drivers to carry proper and valid documentation;
2. To ply through a **dedicated road for GTI bound cargo** (*Google Map and Picture as shown on Page 3*);
3. Avoid haphazard parking of trailers on roads leading to the terminal.

In most cases drivers with incomplete/without documents enter the queue. These trailers end up blocking the road for others with valid documents resulting in the latter missing his gate cut-off. If the above three points are adhered to, your cargo will get quick and efficient evacuation. APM Terminals Mumbai ensures smooth and uninterrupted traffic flow which translates for you into cost savings.

Google image of traffic movement only for GTI bound cargo



Dedicated approach road for APM Terminals Mumbai (GTI)

## “Safe and Efficient Operations”

Constantly engaging employees and stakeholders has yielded in APM Terminals Mumbai jointly working with stakeholders towards making '**Safety, A way of life**'. At APM Terminals we believe that 'Safety is our license to operate'. Time and effort in seeding this thought in the minds of stakeholders has benefitted not only the terminal, but also the Trade. Creating awareness in Road Safety and taking Safety beyond terminal's gates has been acknowledged from all quarters. Stakeholders are made aware that there will be no compromise in Safety, still continuing with efficient operations.

The terminal has witnessed a growth in volumes and productivity levels as well as reached new heights in complying with safety standards.

To keep Clients informed of various safety standards to be followed at the terminal, APM Terminals Mumbai regularly informs Clients of improper/ missing twist locks on container trailers which pose a major hazard to all concerned. Steps are being taken against defaulting tractor trailer drivers not complying with this safety aspect.

Another important safety aspect is the issue of driving under intoxication (DUI). The terminal conducts random checking of trailer drivers through breath analyzers. If driver is found alcohol positive by the terminal's paramedic, he is handed over to the Port's Central Industrial Security Force (CISF) for non-compliance of Safety rules. Moreover his company is informed and asked to depute another driver to take the container out of terminal's gates. Going a step ahead, APM Terminals Mumbai also informs the Shipping Lines to take strict

action against defaulters to deter them from drinking and driving. This initiative has helped in reducing the numbers of such drivers, further ensuring that your cargo and people around reach safely to their destination.

To keep Shipping Line's vessel agents and Operations staff abreast of safety procedures the terminal conducts Safety refresher trainings for them. In the recent past, the terminal's dedicated Safety department visited various Container Freight Stations (CFS) to train trailer drivers regarding road safety to ensure safety of goods and people.

We would as a terminal not only want to grow in volumes, but certainly like to be the best in terms of providing Safe and Efficient Operations to India's EXIM Trade.

**What are you waiting for?**

**Come; Grow Your Business at APM Terminals Mumbai!**



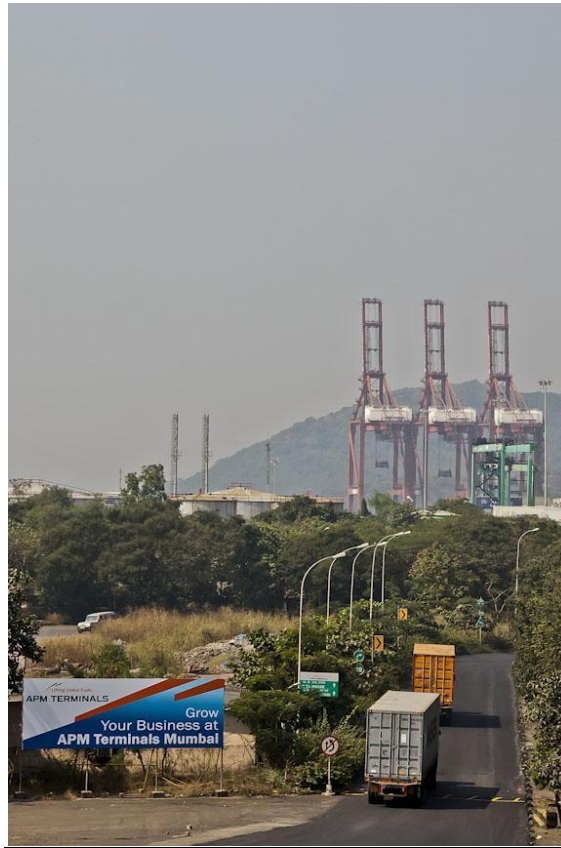
**3 Integrated Rail Sidings within the Yard for faster evacuation of your ICD cargo**

## To know more about APM Terminals Mumbai?

Call us on +91-22-66811200, or write to us at [info@apmtmumbai.com](mailto:info@apmtmumbai.com)

### Contact details:

**APM Terminals Mumbai**, Gateway Terminals India Pvt Ltd.,  
GTI House, Jawaharlal Nehru Port, Sheva, Navi Mumbai – 400 707  
Tel: +91 22 66811000 Fax: +91 22 66811110 Email: [info@apmtmumbai.com](mailto:info@apmtmumbai.com)



### Commercial Desk :

**Amit Malik** : +91 22 66811011  
**Ramit Dutt** : +91 22 66811014  
**Ruby Jadhav** : +91 22 66811145